

# PFAFF

fine sewing

fast - intelligent - powerful

The latest generation of high-speed seamers

# 1180



# PFAFF 1180

## The latest generation of high-speed seamers in the Sewing Industry.

An intelligent machine concept and the use of extremely wear-resistant components guarantee the quality, flexibility and sewing speed of this high-speed seamer. 35 years of experience with the production of "dry machines" and more than 5 years of experience with motors integrated in the sewing head are reflected in these high-speed seamers. Complex assembly work is not required. The machine is supplied ready for use.

The quiet running of the low-vibration machines is one of the outstanding features. The built-in drive unit, AC-SERVO, transmits the power directly to the machine and guarantees a 50% reduction of the power consumption compared to conventional drive units.

The machine works with very low thread tension settings. The needle bar stroke can be changed from 30 to 36 mm, which is an absolute requirement for sewing an extremely wide range of materials.



+ Functional bobbin thread monitor with rest thread sensor -926/06 (optional)

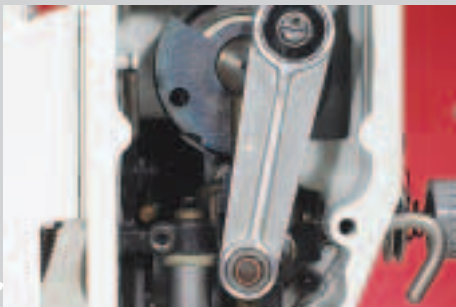


+ 5 years of experience with the sewing drive unit integrated in the sewing head



+ The thread wiper -909/04 (optional) guarantees a neat seam start

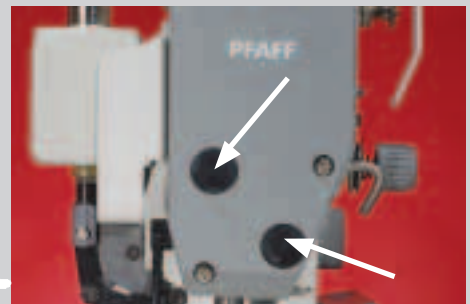
- + 35 years of „dry machines“ (no oil-sump)
- + High flexibility due to the adjustable needle bar stroke (30 to 36 mm).  
One machine for all material thicknesses
- + Up to 13 mm presser foot clearance (with 36 mm needle bar stroke)
- + Eccentric for tilting the feed dog
- + Concealed cable guide integrated in the sewing head
- + Knife/catcher change for the thread trimming device without readjustment
- + Integrated solutions for presser foot lift, backtacking mechanism without compressed air
- + Up to 6 mm stitch length – forward and reverse (on the C-model of the PFAFF 1181/83)
- + Computer-optimised kinematics of take-up lever, feed dog and needle bar motion
- + Sewing head auto select system to recognize set sewing programs and pre-set parameters for service purposes
- + Interface for PC-connection for communication/network and software downloading
- + Integrated bobbin thread winder
- + Oil free sewing (if desired) – by simply changing the hook with 4,000 stitches/min
- + Bobbin rest thread sensor -926/06 with optical display (optional)



+ One machine for thick and thin material:  
adjustable needle bar stroke



+ New triple switch within reach of the operator:  
- forward/reverse  
- needle up without trimming  
- backtack inversion/activation  
- threading key



+ Presser foot and needle bar height can be adjusted from the outside

## Main classes:

### 1183

This high-speed seamer (with bottom feed) works with an optimised hook and needle bar lubrication. It can sew top quality seams at a speed of 5000 spm without any problem.

### 1181

As the PFAFF 1183, but with compound feed

	Machine type	Part set	Versions	Side cutter -731/01	Thread trimmer -900/24	Thread wiper -909/04	Automatic presser foot -910/06	Backtacking mechanism -911/37	Bobbin thread monitor -926/06	Control panel
	1181	8/11	B, N 4.5	●	●		●	●		BDF-S1
		8/11	B, N 4.5		●	●	●	●	●	BDF-S1
		8/13	C, N		●		●	●		BDF-S1
		34/11	A, N 3.0		●	●	●	●	●	BDF-S1
	1183	8/31	B, N 4.5	●	●		●	●		BDF-S1
		8/31	B, N 4.5		●	●	●	●	●	BDF-S1
		8/33	C, N		●		●	●		BDF-S1
		34/31	A, N 3.0		●	●	●	●	●	BDF-S1
	8/44	B, N 4.5		●		●	●		BDF-S1	
PULLER	1181	8/92	B, N 4.5		●		●	●	●	BDF-S2
		34/92	A, N 3.0		●		●	●	●	BDF-S2
	1183	8/93	B, N 4.5		●		●	●	●	BDF-S2
		34/93	A, N 3.0		●		●	●	●	BDF-S2
SRP	1181	8/11	B, N 4.5		●	●	●	●	●	BDF-S2
		34/11	A, N 3.0		●	●	●	●	●	BDF-S2
	1183	8/31	B, N 4.5		●	●	●	●	●	BDF-S2
		34/31	A, N 3.0		●	●	●	●	●	BDF-S2

- = Optional
- = Standard

Trimming margins on the -731/01: 5 mm  
(others on request)

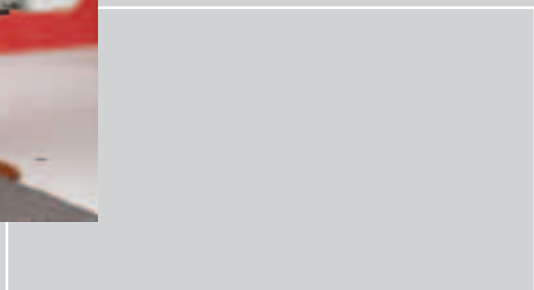
*From SILK to JEANS:*

The part sets of the high-speed seamer series:



## Version A

For sewing delicate materials

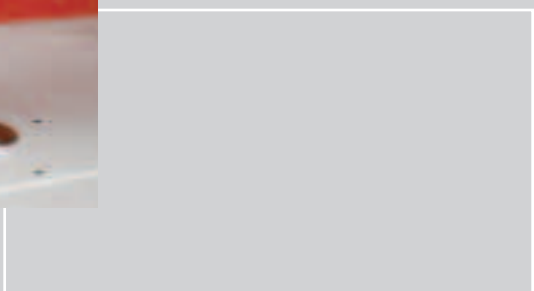


-34/31 A N3.0  
A-part set  
(bottom feed)  
for PFAFF 1183



## Version B

For sewing medium materials



-8/31 B N4.5  
B-part set  
(bottom feed)  
for PFAFF 1183



-8/33 C N  
C-part set  
(bottom feed)  
for PFAFF 1183

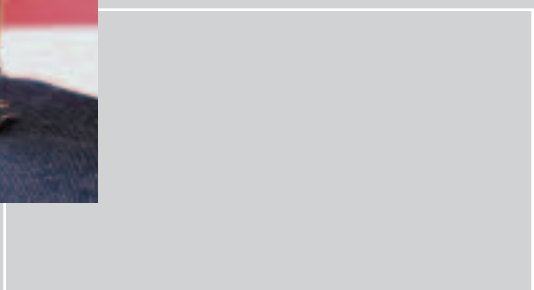


-34/11 A N3.0  
A-part set  
(needle feed)  
for PFAFF 1181



## Version C

For sewing medium-heavy materials



-8/11 B N4.5  
B-part set  
(needle feed)  
for PFAFF 1181



-8/13 C N  
C-part set  
(needle feed)  
for PFAFF 1183

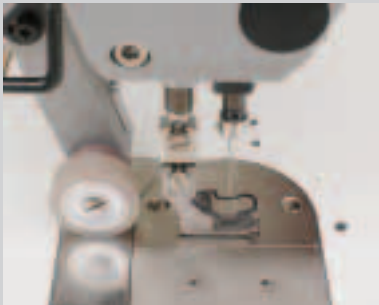


Pfaff's Premium High-Speed Seamers:

# Puller



Puller with standard presser foot (closed)



Puller with presser foot and adapter



Easy adjustment to different puller widths

## PFAFF 1180 with Puller (-948/51)

The new PFAFF puller drive generation is here – a high-speed seamer with continuous puller feed, used mainly for sewing long closing, top-stitching and hemming seams. The highly effective continuous puller feed system makes the operators job a lot easier. The puller machines achieve a high-quality seam. A strong point of the PFAFF continuous puller feed system is the ability to sew smooth, finely flowing seams on difficult light to medium-heavy fabrics.



## Features/Advantages

- The electronically-controlled puller feed motion, in conjunction with a pre-selectable roller pressure, guarantees smooth seams
- Puller feed stroke and pressure can be adapted to the workpiece easily on the control panel
- The all-purpose machine - the puller can be raised, stopped and swung out of the work area manually
- Puller unit can be shifted to the side of the needle
- Puller roller in different widths 10 mm (standard), 15, 20 and 30 mm
- Bobbin rest thread sensor (-926/06) always guarantees completed seams (optional)
- Microfine to medium parts sets for best feed properties
- „Flash facility“ for software updates without changing the E-prom and without opening the control unit
- By storing the individual settings, the new sewing head auto select system makes servicing easy

# SRP

## PFAFF 1180 with SRP

New-generation, premium high-speed seamers. With SRP (speed responsive presser foot control) these intelligent machines are equipped with a system, which, depending on the speed, increases or reduces the presser foot pressure during sewing. The highly dynamic system reduces puckering (ply shift puckering) to almost zero. These flexible high-speed seamers offer maximum sewing comfort due to the excellent feed properties in conjunction with the SRP system and the infinitely variable automatic presser foot lift. Best results are achieved even on closing and top-stitched seams where high-quality is demanded.



## Features/Advantages

- Highly effective feed system (SRP) during sewing – only minimal shifting of the workpiece even at high sewing speeds
- Very low thread tension required – with constant, high-quality seam = minimum tension puckering
- Next to no shifting of the workpieces when sewing difficult fabrics for ladies' and men's outerwear
- Presser foot presser can be adapted individually to the sewing operation
- SRP is a great support for easy application of small amounts of fullness
- Optimum high-powered feed system for sewing over folds, bulky parts and multi-layered seams etc.
- Infinitely variable presser foot height, operated by knee switch, for easy "corner turning"
- State of the art software updates without changing the E-prom and without opening the control unit
- By storing the individual settings, the new sewing auto select system makes servicing easy
- Process-controlled sewing foot lift - no thread wiper required
- Microfine to medium part sets
- Bobbin rest thread sensor (-926/06) always guarantees completed seams (optional)

*„One day all high-speed seamers  
will be equipped with SRP“*

# PFAFF

fine sewing

## Specifications:

### **Stitch type:**

301 (lockstitch)

### **Max. stitch length:**

6 mm

### **Max. fabric clearance:**

13 mm

### **Needle bar stroke:**

adjustable to 30 or 36 mm

### **Needle systems and sizes:**

1181/1183: 134 (DBx1), max.: Nr. 140

### **Connection voltage:**

single-phase a.c.,  
230 V, 50/60 Hz

### **Power input:**

0.4 KW

### **Weight: gross/net**

approx. 54 kg / approx. 49 kg

### **Dimensions/cardboard box:**

33 x 66 x 72 cm

### Hotlines:

Technical service : ++49-175/2243-101

Application concultance : ++49-175/2243-102

Spare-parts hotline : ++49-175/2243-103



### **PFAFF Industrie Maschinen AG**

- Postfach 3020  
D-67653 Kaiserslautern
- Königstr. 154  
D-67655 Kaiserslautern

Telefon: ++49-631/200-0

Telefax: ++49-631/17202

Internet: [www.pfaff-industrial.com](http://www.pfaff-industrial.com)

Printed in Germany  
engl.  
296-12-18772 04/04